



Our passion is chocolate...
since more than **26** years...

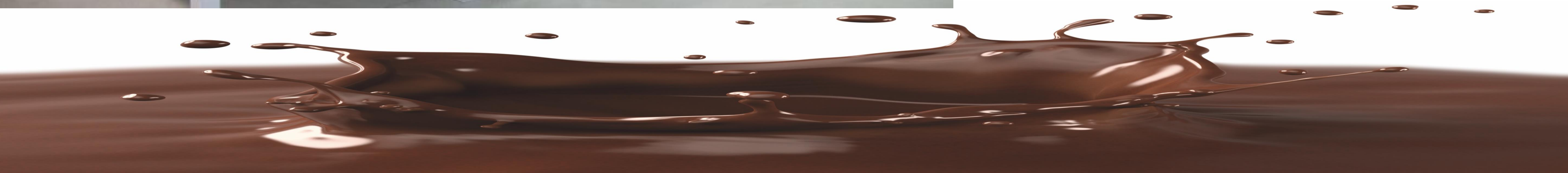
Machinery – Equipment – Service
for the confectionary and food industry



SCHNEIDER
ANLAGENTECHNIK

Our passion is chocolate...
since more than 26 years...

**Infeed stations for
dry components**





SCHNEIDER
ANLAGENTECHNIK

Our passion is chocolate...
since more than 26 years...

Pneumatic transport of dry components

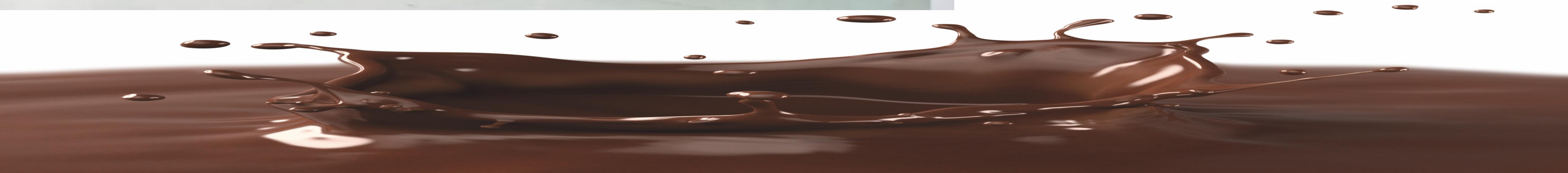




SCHNEIDER
ANLAGENTECHNIK

Our passion is chocolate...
since more than 26 years...

**Storage tanks for
dry components**

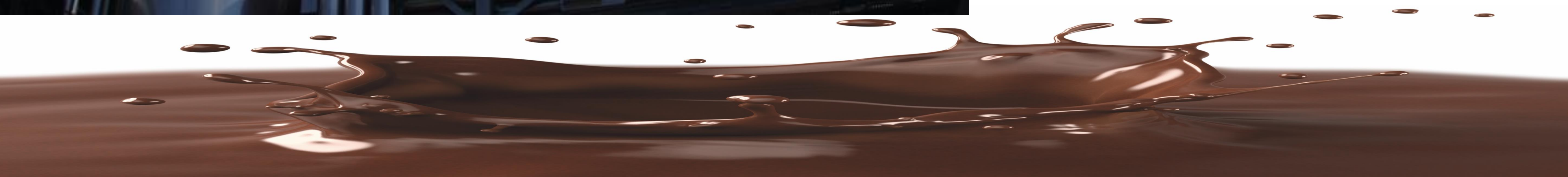




SCHNEIDER
ANLAGENTECHNIK

Our passion is chocolate...
since more than 26 years...

Silo installation





SCHNEIDER
ANLAGENTECHNIK

Our passion is chocolate...
since more than 26 years...



Blockbreaker type BBR 06





SCHNEIDER
ANLAGENTECHNIK

Our passion is chocolate...
since more than 26 years...

**Horizontal melting /
storage tank**

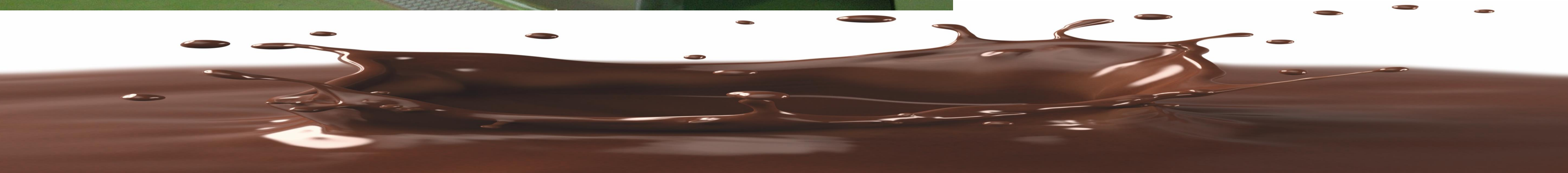




SCHNEIDER
ANLAGENTECHNIK

Our passion is chocolate...
since more than 26 years...

**Block melting station with
horizontal stirrer
type AHRL 94**





SCHNEIDER
ANLAGENTECHNIK

Our passion is chocolate...
since more than 26 years...

**Steel installation for
powder handling**





SCHNEIDER
ANLAGENTECHNIK

Our passion is chocolate...
since more than 26 years...

Mixer type MR 92

**Mixing and kneading of
pasty masses**





SCHNEIDER
ANLAGENTECHNIK

Our passion is chocolate...
since more than 26 years...

Pre refiner type VWK 02

**Throughput capacity between
3tons and 8tons/h**





SCHNEIDER
ANLAGENTECHNIK

Our passion is chocolate...
since more than 26 years...

5-Roll-Refiner, refurbished





SCHNEIDER
ANLAGENTECHNIK

Our passion is chocolate...
since more than 26 years...

Conveyor belt type ETD 13

Body made of stainless steel





SCHNEIDER
ANLAGENTECHNIK

Our passion is chocolate...
since more than 26 years...

Single shaft dry conche type TNCE 13

**Available in sizes between
1.000 until 12.000 kg**





Our passion is chocolate...
since more than 26 years...

Lab conche type L-TNCE 13

For trials of new recipes



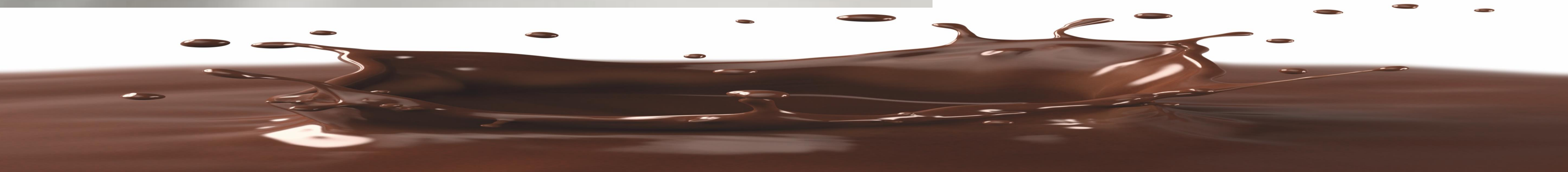
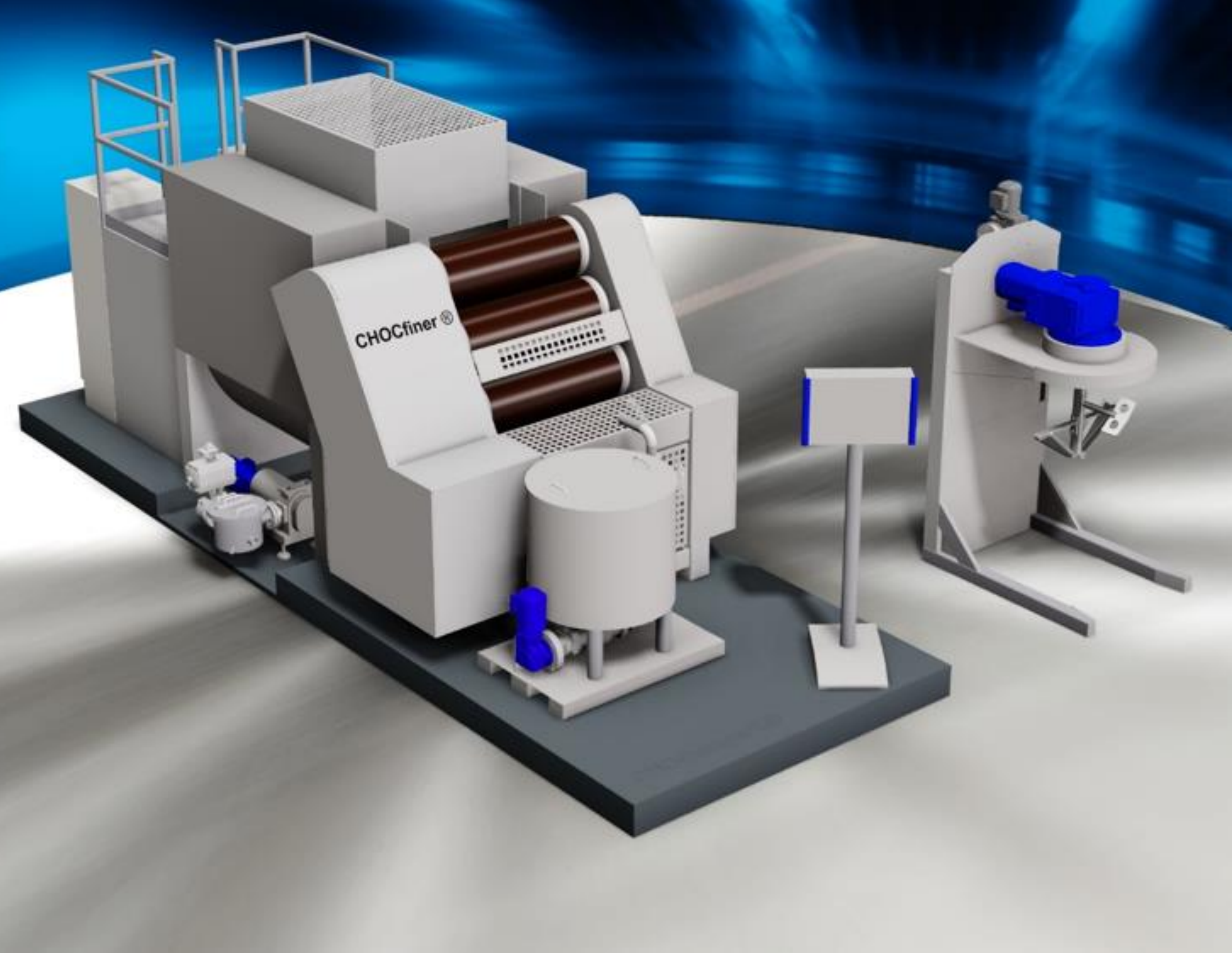


Our passion is chocolate...
since more than 26 years...

Compact production line type CHOCompact®

Small chocolate plant for 1t/shift

Fits in a 40ft container





SCHNEIDER
ANLAGENTECHNIK

Our passion is chocolate...
since more than 26 years...

Production line type CHOComplete®

**Production lines for capacities
up to 7,5 t / h**





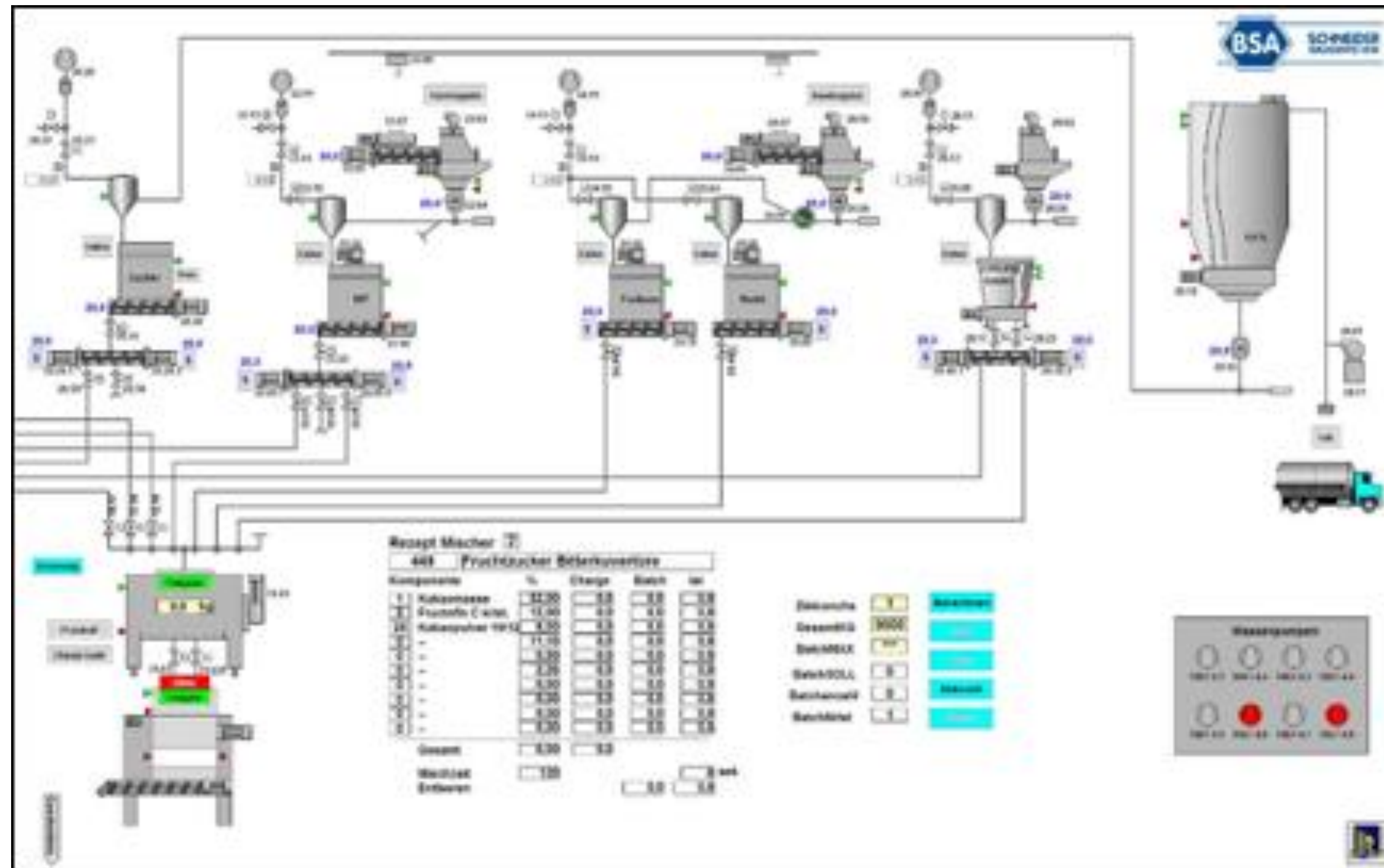
SCHNEIDER
ANLAGENTECHNIK

Our passion is chocolate...
since more than 26 years...

Software

**Visualization of single machines
or entire lines**

Remote maintenance control





SCHNEIDER
ANLAGENTECHNIK

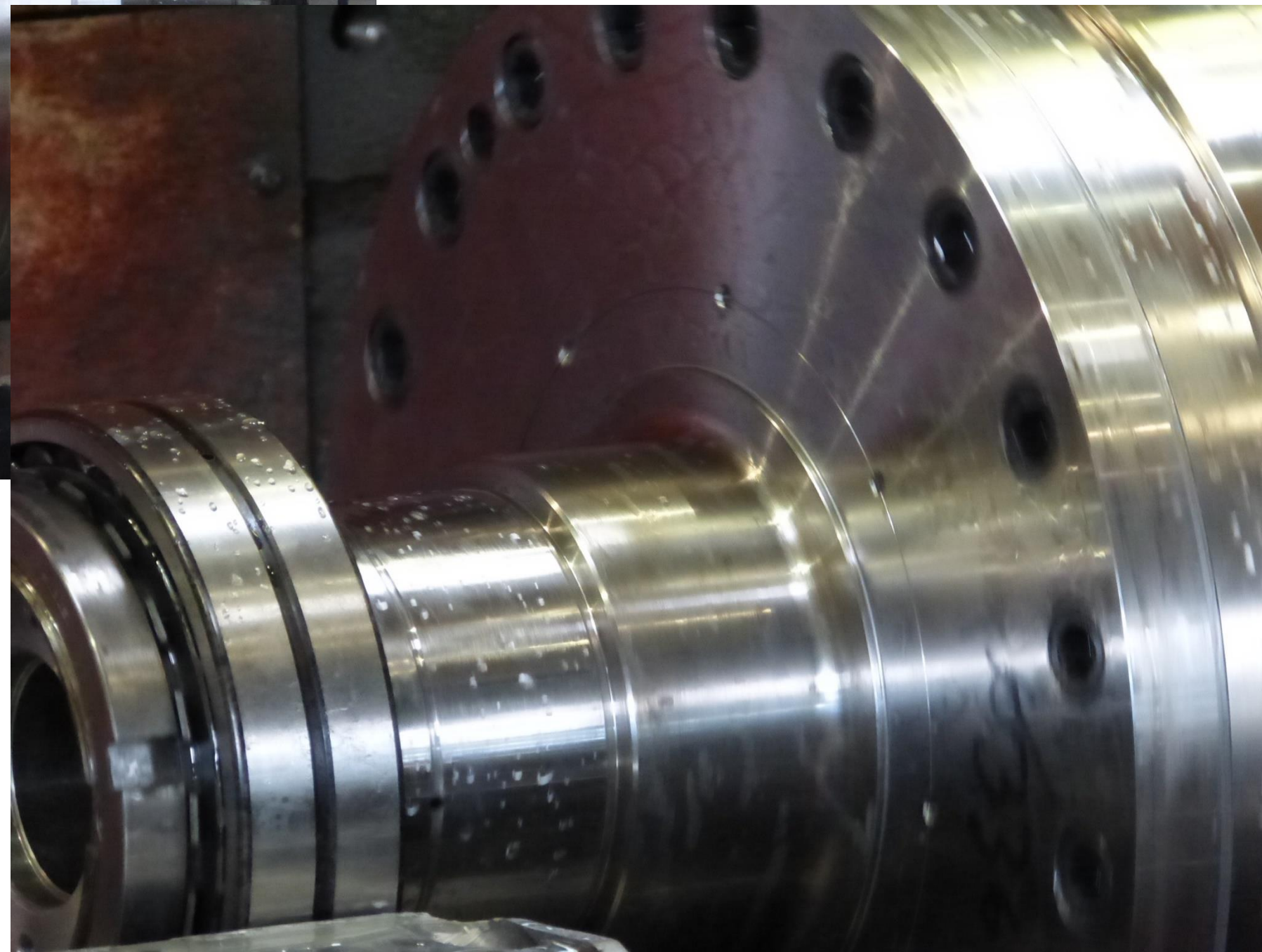
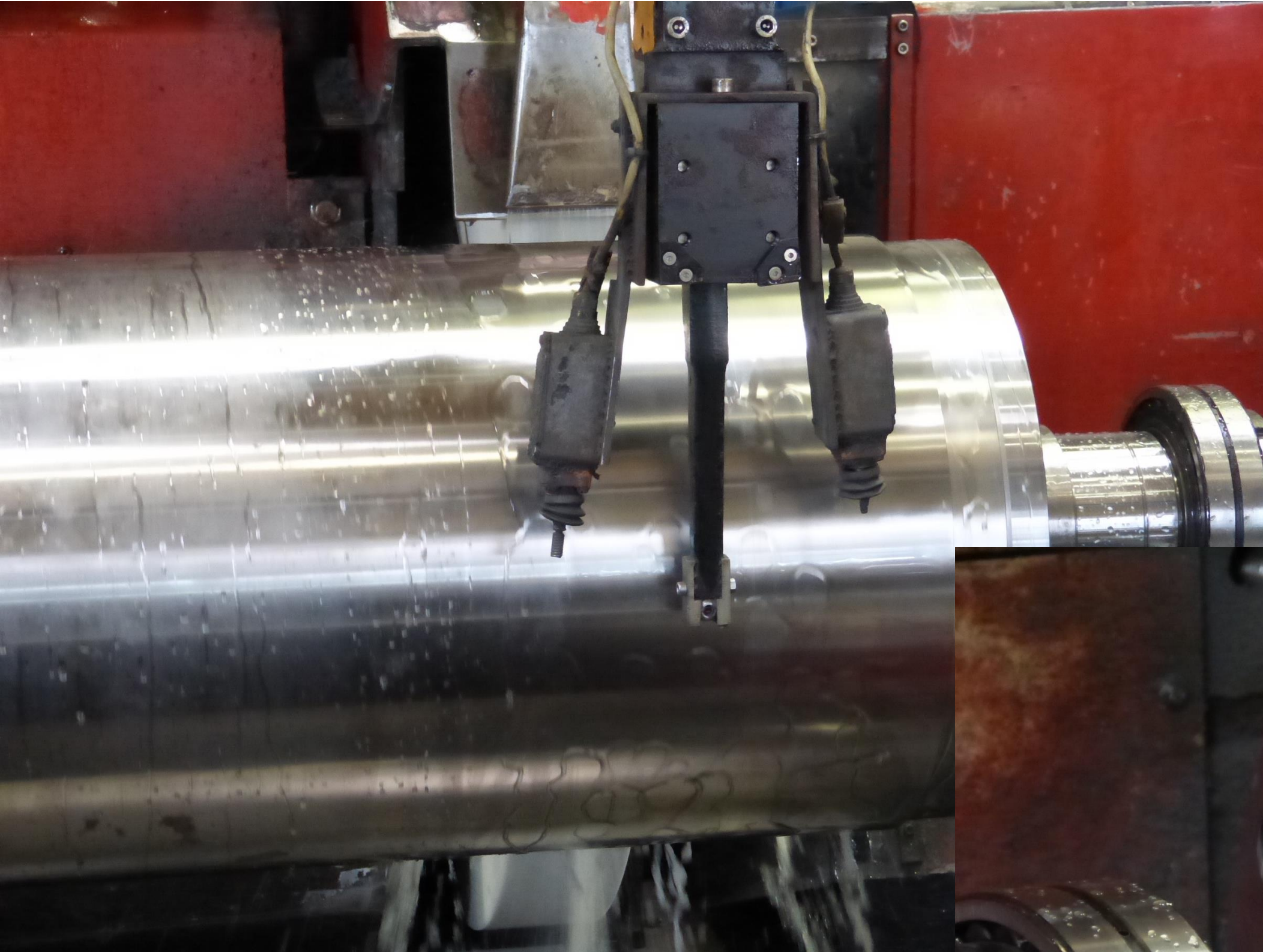
Our passion is chocolate...
since more than 26 years...

Outdoor storage

**Storage tanks executed as
multi chamber versions**

Example: 5*25 tons





Our passion is chocolate...
since more than 26 years...

Refiner service

Regrinding of cylinders

Maintenance on gears, etc.





Certified Management System

It is hereby confirmed that company

BSA Schneider Anlagentechnik GmbH
Grüner Winkel 7-9
52070 Aachen



has fully implemented a management system in accordance with the standard

DIN EN ISO 9001:2008

for the following scope of application:

**Development, project management, distribution,
fabrication and assembling of machines and
equipments for the sweets industry**



ICG Zertifizierung GmbH, Wildparkstraße 3, D-05247 Chemnitz / Germany

Date of initial certification: 19.02.2008
Certificate registration no.: 1310580
This certificate is valid until: 14.02.2017
Chemnitz: 15.02.2014

R. Allen
Certifying body

Letter of Conformity

Awarded to

BSA Schneider Anlagentechnik GmbH
Grüner Winkel 7-9, 52070 Aachen

This letter is to attest that on

December 2013

BSA Schneider Anlagentechnik GmbH

has been audited by *SGS* and that at that date the site
has no pending non compliances and therefore
comply with the

Nestlé Responsible Sourcing Audit Program

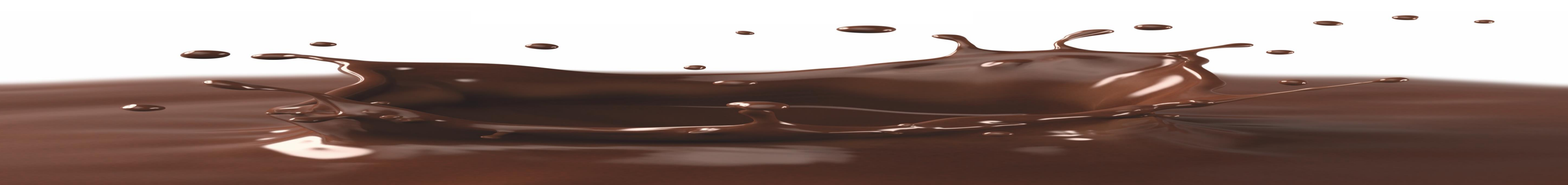
(SMETA 4 Pillars requirements)

Issue Date	Auditor's Name and Signature
May 2013	<i>Seliga</i> Digital unterschieden von Thomas Seliga
Valid Until (3 years after Issue Date):	
May 2016	
Email of Nestlé buyer who requested the audit	
marian.kukan@sk.nestle.com	



Our passion is chocolate...
since more than 26 years...

Certifications





Our passion is chocolate...
since more than **26** years...

Machinery – Equipment – Service
for the confectionary and food industry